



Cakes and Pies@2006 Wayne Thiebaud and Crown Point Press

**WAYNE THIEBAUD (1920-2021)**

**CAKES AND PIES 2008**

Color Direct Gravure / Coast Restaurant, near entry

American Pop Art painter Wayne Thiebaud was best known for his colorful still lifes depicting pastries and cakes, commonplace objects of gumball machines and lipstick, and his cityscapes. He also, and for good reason, came to be linked with Bay area Figuratives like David Park and Richard Diebenkorn, playing a large role in the evolution of the California art scene during the 1960's, '70s and '80s. Thiebaud's paintings are easily recognizable with heavy pigment, exaggerated colors, and well-defined shadows reminiscent of advertisements. In 2001 Thiebaud received a lifetime Achievement Award for Arts from the American Academy of Design, and in 1994 he was awarded the National Medal of Arts by President Clinton. His works have been collected by major museums around the world for decades.



The Basque Suite © 1971 Robert Motherwell

**ROBERT MOTHERWELL (1915-1991)**

**THE BASQUE SUITE (1 OF 2) (BELKNAP 51) 1970-1971**

Color silkscreen / Downstairs at foot of stairs

Motherwell was a seminal Abstract Expressionist painter associated with the New York School in the 1950's and '60s. He worked with the same imagery for many decades, investigating forms that incorporated bold gestures and a dynamic use of the color black. He integrated aspects of action painting and color field painting to form his own style. Mediterranean Light, hanging outside the Grand Salon, uses imagery seen in his best-known painting series, entitled "Elegy to the Spanish Republic." Motherwell painted more than 150 variations of this theme.



Seahorses © 1989 Yayoi Kusama

**YAYOI KUSAMA (Born 1929)**

**SEAHORSES 1989**

Screenprint / Downstairs west wall

Japanese artist Kusama is one of the most influential artists of the 1960's. At age ten, she started to paint using her signature polka dots and nets as motifs that would become her trademark. She left Japan in 1957 for New York, and during her time in the United States she established her reputation as a leader in the avant-garde movement. Kusama's work is rooted in conceptual art but has also been categorized as Minimalism, Feminism, Surrealism, Pop and Abstract Expressionism. Her paintings, collages, soft sculptures, performance art and environmental installations all share in obsession with repetition and pattern.



My Marilyn © 1965 Richard Hamilton

**RICHARD HAMILTON (1922-2011)**

**MY MARILYN 1965**

Silkscreen printed in colors / Downstairs, toward Promenade A and B

Hamilton's contributions to the "This Is Tomorrow" exhibition at the Whitechapel Art Gallery in 1956 established him as a founder of the British Pop Art Movement. In 1957, Hamilton merged commercial media and cultural values in his philosophy of Pop Art: popular (designed for a mass audience), transient (short term solution), expendable (easily forgotten), low cost, mass produced, young (aimed at youth), witty, sexy, gimmicky, glamorous and big business.



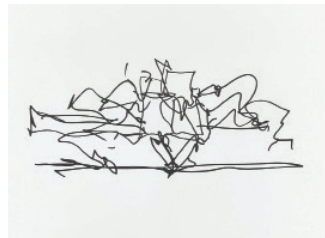
Spattership © 1990 Ed Ruscha

**ED RUSCHA (Born 1937)**

**SPATTERSHIP 1990**

2-color Lithograph on white Rives BFK paper / Downstairs, near Promenade A and B

Ruscha was one of the foremost Pop artists on the West Coast during the 1960's and has been living and working in the LA area for over sixty years. From the cool scenes of filling stations to his meticulous painting of pills and the famous Hollywood sign, his art embodies the spirit of contemporary America. Fascinated with words and Pop imagery, Ruscha continues to explore the use of language to create irony and meaning in his work. Through his innovative approach to painting, drawing, and photography, Ruscha has influenced artists worldwide and is considered to be one of the most important figures in contemporary art today. He had his first drawing retrospective at the Whitney Museum of American Art in 2004.



Walt Disney Concert Hall © 2009 Frank Gehry and Gemini G.E.L.LLC  
Marques de Riscal Winery © 2009 Frank Gehry and Gemini G.E.L.LLC

**FRANK GEHRY (Born 1929)**

**WALT DISNEY CONCERT HALL 2009 & MARQUES DE RISCAL WINERY 2009**

1-color Lithographs / Downstairs, past Promenade A and B

Canadian-born American sculptor and architect, Frank Gehry has designed some of the most important buildings of the last quarter of the 20th century. His best-known works include the titanium-covered Guggenheim Museum in Bilbao, Spain, Walt Disney Concert Hall in Los Angeles, and the Experience Music Project in Seattle. Gehry makes sketches to begin his architectural process. From sketches to models to finished buildings, his buildings are known for their playful, asymmetrical exteriors and their use of materials traditionally limited to industry.



Polar Co-ordinates VII © 1980 Frank Stella

**FRANK STELLA (Born 1936)**

**POLAR CO-ORDINATES VII 1980**

Offset Lithograph, Screenprint and Letterpress / Downstairs, next to Oceanside meeting room

Stella began as a minimalist painter of geometric shapes and curving forms. He first gained wide recognition in 1960 with the exhibition of his "Stripe Paintings" at the Museum of Modern Art in New York. His paintings became known for their symmetrical patterns and repeating motifs; over time becoming more elaborate and exuberant with bright colors and scrawled brushstrokes, and in his three-dimensional reliefs he has challenged the traditional boundaries between painting and sculpture. Stella began making prints in the mid-1960's, working first with master printer Kenneth Tyler at Gemini G.E.L. in Los Angeles. His art has been the subject of major retrospectives in the United States, Europe, and Japan.



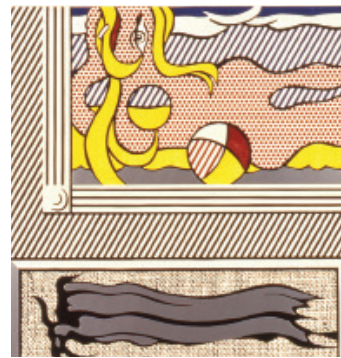
Mediterranean Light © 1992 Robert Motherwell

**ROBERT MOTHERWELL (1915-1991)**

**MEDITERRANEAN LIGHT 1992**

Lithograph / Downstairs, outside Grand Salon

Here Motherwell uses imagery seen in his best-known painting series, entitled "Elegy to the Spanish Republic." Motherwell painted more than 150 variations of this theme.



Two Paintings Beach Ball © 1984 Roy Lichtenstein and Gemini G.E.L.

**ROY LICHTENSTEIN (1923-1997)**

**TWO PAINTINGS BEACH BALL 1984**

7 color Woodcut / Lithograph / Screenprint / Downstairs, outside east Promenade Room

Beginning in the early 1960's, Pop artist Roy Lichtenstein mined advertisements and comics to make groundbreaking paintings that brought American pop culture into the gallery space. He became known for his painted comic book images of violent action and sentimental love, exploring the everyday modern America. Lichtenstein went on to employ his characteristic Ben-Day dot and line technique in a wide variety of subjects, including landscapes, architecture, and fine art. Notably, his most expensive work Masterpiece, 1962, which sold for \$165 million in January 2017, was part of Lichtenstein's first exhibition at the famed Ferus Gallery in Los Angeles in 1963.



The Basque Suite © 1971 Robert Motherwell

**ROBERT MOTHERWELL (1915-1991)**

**THE BASQUE SUITE (2 OF 2) (BELKNAP 55) 1970-71**

Color silkscreen / Lithograph / Downstairs, outside Promenade B and C



Shutters  
ON THE BEACH®

SELF-GUIDED ART TOUR



**ALEX KATZ (1927)**

**COCA COLA GIRL 1 2019**

Color Silkscreen / Adjacent to lobby, behind north fireplace

Postwar American figurative artist, Katz is known for his bold, and persuasive use of color in his large-scale depictions of portraits, landscapes, and flowers. He emerged in New York in the late 1950's and for more than fifty years has painted portraits of friends, artists, and his wife Ada who is his model and muse. His landscapes of Maine are a continued reference to his being a resident at the Skowhegan School of Painting and Sculpture in 1949-50. Katz has had more than 200 gallery and museum exhibitions and his work is in more than 100 institutions around the world.

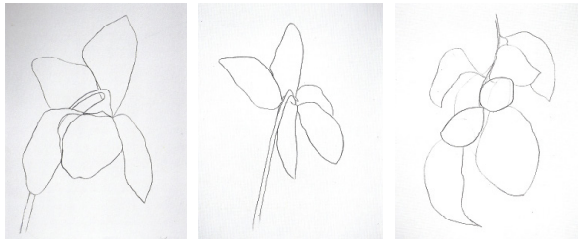


Blueberry Soup © 2012 John Baldessari and Gemini G.E.L. LLC  
Carrot Soup © 2012 John Baldessari and Gemini G.E.L. LLC

**JOHN BALDESSARI (1931-2020)**

**BLUBERRY SOUP, CARROT SOUP 2012**  
14 Color Screenprints / Lobby, Guest Relations Desk

Baldessari worked with appropriated images and texts, studied their relationships through his paintings, prints, photography and "story art." His Soup Series is an homage to Henri Matisse and to Andy Warhol. One of California's most influential artists, a father of Conceptual Art and a beloved teacher. Baldessari taught at many institutions, most notably at California Institute of the Arts in Valencia. In 2009, he had a major retrospective exhibition "John Baldessari: Pure Beauty," which originated at the Tate Modern in London and traveled to Museu d'Art Contemporani de Barcelona, Los Angeles County Museum of Art and the Metropolitan Museum of Art in New York.



Cyclamen II, Cyclamen IV, Camellia III © 1964-65 Ellsworth Kelly

**ELLSWORTH KELLY (1923-2015)**

**CYCLAMEN II, CYCLAMEN IV, CAMELLIA III 1964-65**  
Transfer Lithographs / Lobby, behind Front Desk

For seven decades, Color Field painter Kelly was a leader of the Hard-Edge School, using sparse composition in which there was no foreground, background, or figuration. In his later works, he explored shaped and enjoining canvases. Furthering

his interest in integral forms, Kelly used found compositions like the contour of a California leaf for his celebrated prints and drawings of plants and leaves. Kelly's first retrospective was at the Museum of Modern in New York in 1973 and had many subsequent museum exhibitions. In 2012, the Los Angeles County Museum of Art presented Ellsworth Kelly: Prints and Paintings, the first retrospective examination of Kelly's prolific print practice since 1988.

**SAM FRANCIS (1923-1994)**

**UNTITLED 1986**  
Lithograph / Lobby, north wall across from Executive Office entrance

After graduating from Cal Berkeley in 1950 with a degree in art, Francis moved to Paris, where he would go on to be named by Time Magazine as, "the hottest American painter in Paris these days." One of the few west coast artists to achieve international acclaim in Post-War American painting, Sam Francis painted during many important movements. He eluded formal classification by developing his own lyrical form of abstraction, without concern for fashion or categories. Francis is known primarily for his colorful drips and spatters on canvas. Often deceptively simple at first glance, his paintings are carefully planned to balance color with white space and randomness with logic. He was a primary conduit of Zen Philosophy in 20th Century art and traveled extensively throughout the East.



Untitled © 1986 Sam Francis

The contemporary prints you see here at Shutters on the Beach were chosen to represent the spirit of Los Angeles, the California coast, and contemporary art. Shutters is proud to display some of the most influential artists of our time. The collection was organized out of a desire to celebrate these artists, and was selected and curated by Cynthia Greenwald, Fine Art Advisory, Los Angeles. To learn more about the Shutters on the Beach art collection, please contact Cynthia at (310) 433-9310 or cynthia@artbuyer.biz.

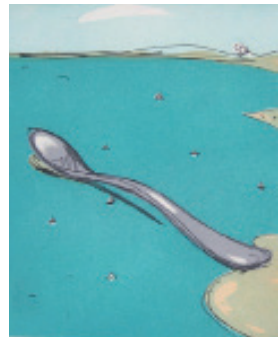


Blue with Red © 1987 Richard Diebenkorn

**RICHARD DIEBENKORN (1922-1993)**

**BLUE WITH RED 1987**  
Color Woodcut / Lobby, north wall next to Executive Office entrance

Influenced by artists Henri Matisse and Piet Mondrian, California native Richard Diebenkorn was one of the most significant West Coast painters during the latter half of the 20th Century. The artist's distinguished career, which began in the 1940's, is characterized by three styles, Abstract Expressionism, Figuration, and his best-known "Ocean Park" series. Inspired by the Santa Monica Coast where Diebenkorn lived and worked until 1955, the Ocean Park paintings are geometric studies in light and color. In 1992, Diebenkorn had an international retrospective spanning his life's work and in 2022 was the subject of a Centennial Celebration at Stanford University.



Spoon Pier © 1975 Claes Oldenburg

**CLAES OLDENBURG**

**SPOON PIER 1975**  
Etching / Opposite The Cottage Gift Shop

Oldenburg remains one of the most brilliant inventions of all the artists who emerged from the Pop Art Movement. In 1961, Oldenburg turned his store exhibit of plaster-created food and clothes into an actual store, raising questions about the relationship between art and commerce. Since the 1960's, he has expanded on the theme of his brightly painted plaster reliefs, creating giant soft sculptures and large outdoor works that show a humorous manipulation of common objects and fast-food culture including the landmark "Binoculars," a central component of the Chiat/Day Inc. building designed by Frank O. Gehry located on Main Street in Venice, California.



Untitled #1 ('Flags') © 1985 Malcolm Morley

**MALCOLM MORLEY (1931-2018)**

**UNTITLED #1 ('FLAGS') 1985**  
Lithograph / Lobby, behind the piano, north wall

Morley first gained attention in the mid-'60s for his photorealist paintings. Then his work has taken a far more expressionistic and painterly bent, and his creations ranged from eccentric mixed media works to watercolors and oil paintings depicting seascapes and ships. His multicolored canvases are infused with a shimmering energy, making the surfaces appear alive. In 1984, he became the first recipient of the Turner Prize, awarded by the Patrons of New Art at the Tate Gallery in London.

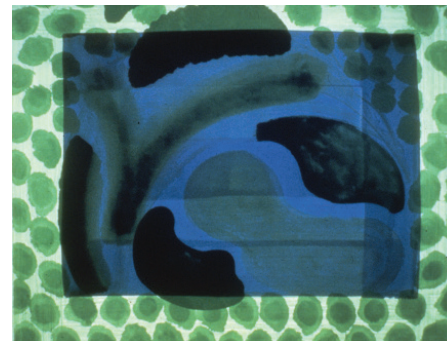


#6 (After 'Untitled 1975') © 1976 Jasper Johns and Gemini G.E.L.

**JASPER JOHNS (Born 1930)**

**#6 (AFTER 'UNTITLED 1975') 1976**  
16 color Lithograph / Lobby, west seating area, north wall

Johns is one of the most creative and innovative artists, renowned in the international art community for his impact on contemporary art. As a pioneer of Pop Art in the mid-'50s and early '60s, Johns painted familiar objects such as the American flag, targets, and even beer cans, challenging our perception of objective reality and causing us to question the inherent nature of the object itself. The crosshatch motif is one of the recurring images that Johns uses to explore the juxtaposition of line and color. Johns has received many honors throughout his career, including receipt of the National Medal of Arts in 1990, and the Presidential Medal of Freedom in 2011. In 2018, The New York Times called him the United States "foremost living artist."



David's Pool © 1985 Howard Hodgkin

**HOWARD HODGKIN (1932-2017)**

**DAVID'S POOL 1985**  
Etching with hand color / Lobby, west seating area, south wall

Born in London, Hodgkin was a self-described "representational painter of emotional situations." His work combines vivid, decorative colors in elaborate asymmetrical patterns of abstract shapes. Inspired by his love of Indian miniatures, Hodgkin mixed both reality and memory by referring in the abstract to various people and places. He studied and taught extensively throughout England and was an active figure in both the politics of art and the social world. In 1984, Hodgkin represented Britain at the Venice Biennale, in 1985 he won the Turner Prize and in 1992 he was knighted. "David's Pool" won Hodgkin first place in the Bradford Print Biennale in 1986.



Blue Hang Cliff © 1993 David Hockney and Gemini G.E.L.

**DAVID HOCKNEY (Born 1937)**

**BLUE HANG CLIFF 1993**  
23 color Lithograph / Screenprint / Lobby, east seating area, south wall

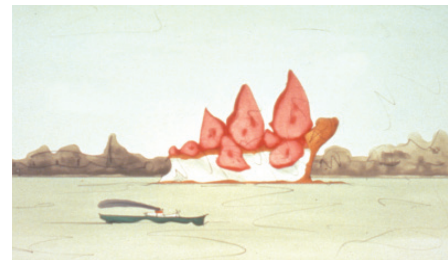
David Hockney made an impact on the art world even before he graduated from the Royal Academy of Art in 1962. He emerged on the art scene at the same time the Beatles were redefining "Rock 'n Roll," and his innovation in style and medium were just as revolutionary for modern painting. An early British Pop artist, Hockney focused on the Southern California lifestyle after moving to California in the early 1960's. He drew imagery and inspiration from his own life and from the lives of his friends and lovers. A book artist and set designer, Hockney has redefined the way we observe everyday reality and his diverse and ever-evolving work. In 1988, Hockney had a major retrospective that originated at the Los Angeles Museum of Art.



Celia in an Armchair © 1981 David Hockney and Gemini G.E.L.

**DAVID HOCKNEY (Born 1937)**

**CELIA IN AN ARMCHAIR 1981**  
2 color Lithograph / Stairwell landing leading to Coast restaurant



Slicing Strawberry Shortcake © 1992 Claes Oldenburg

**CLAES OLDENBURG (Born 1929)**

**PROPOSED MONUMENT FOR MILL ROCK, EAST RIVER, NYC: SLICING STRAWBERRY CHEESECAKE, 1992**

Etching /Downstairs, by beach entrance



Moondoggers, Beach Cruiser, Surfline © 1991 William Wegman



**WILLIAM WEGMAN (Born 1943)**

**MOONDOGGERS, BEACH CRUISER, SURFLINE 1991**

Polaroid Polacolor II Photographs / Downstairs, by beach entrance

Photographer-artist Wegman is best known for his humorous photo-portraits of his Weimaraner dog named Man Ray (and Man Ray's

successor Fay Ray, and Fay Ray's puppy Betina). The significance of Wegman's work lies in the staging of his photographs. The artist dresses his dogs, photographs them with props, and then places them in human-like poses. In addition to gallery and museum exhibitions, Wegman and his dogs have made special appearances on The Tonight Show, Good Morning America, MTV, Sesame Street, Saturday Night Live, and in Gap clothing store ads. He has also published versions of Cinderella and Little Red Riding Hood, in which the dogs appear as the well-known characters.



Paradise © 1989-90 John Baldessari

**JOHN BALDESSARI (1931-2020)**

**PARADISE 1989-90**  
Photogravure with Color Aquatint / Downstairs, opposite beach entrance